

HIGHLIFE® COLLECTION

# SOVEREIGN®



FreshWater® IQ  
System Ready



100% Filtration  
SilentFlo Circulation



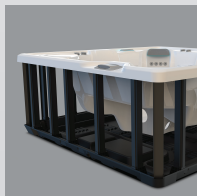
Moto-Massage® DX



Super Energy  
Efficient



Color LCD  
Touchscreen



Polymer Substructure  
& Base Pan



*Shown with Alpine White Shell  
and Brushed Nickel Cabinet*

People	Seating	Jets	Voltage
5 Seats	Lounge	32 Jets	230 V

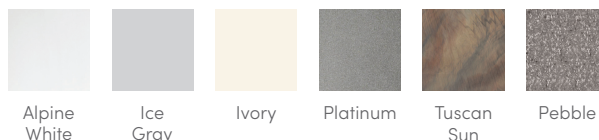
**Size**  
6'8" x 7'9" x 33" | 203 cm x 236 cm x 84 cm

**Water Care**  
FreshWater® Salt System Included

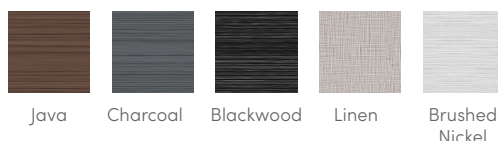
# HIGHLIFE® COLLECTION SOVEREIGN®



## SHELL COLORS

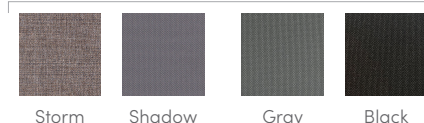


## CABINET COLORS



## COVER COLORS

POLYESTER



## CABINET AND SHELL COLOR OPTIONS\*

Cabinet Colors	Java	Charcoal	Blackwood	Linen	Brushed Nickel
<b>Shell Colors</b>	Alpine White Ice Gray Ivory Tuscan Sun Pebble	Alpine White Ice Gray Platinum Tuscan Sun Pebble	Alpine White Ice Gray Platinum	Alpine White Ivory Tuscan Sun Pebble	Alpine White Ice Gray Platinum

## LEGENDARY MASSAGE

### 32 Personalized-Control Jets

- Moto-Massage® Lounge
- Soothing Stream® Seat
- Precision® Jet Seat
- Hydromassage Seat

## EASY WATER CARE

**Water Care System** FreshWater® Salt System Included  
Smart Monitoring System Optional

**Filtration System** 100% No-bypass Filtration  
Exclusive, High-flow Tri-X® Filters  
195 sq. ft. Filtration Area

## LEADING ENERGY EFFICIENCY

**Jet Pump** Wavemaster® 9200; Two-speed, 2.5 HP Continuous Duty,  
5.2 HP Breakdown Torque

**Circulation Pump** SilentFlo 5000® for quiet, continuous filtration

**Heater** Titanium No-Fault® 6,000 W / 230 V

**Insulation** Multiple Layers of Foam Insulation; Certified to California  
Energy Commission (CEC) and APSP 14 energy efficiency  
standards for portable spas

**Cover** WeatherPro™ 4" Tapered Custom-Fit with Hinge Seal

## SIZE

**Dimensions** 6'8" x 7'9" x 33" / 203 cm x 236 cm x 84 cm

## CAPACITY

**Seating Capacity** 5 seats with lounge

**Water Capacity** 330 gallons / 1,250 liters

**Weight** 600 lbs. / 270 kg dry; 4,230 lbs. / 1,920 kg filled\*\*

## ADDITIONAL FEATURES

**Smart Spa Technology** Hot Spring Spas App, Powered by the Connected Spa Kit

**Water Feature** BellaFontana® with 3 illuminated arcs of water

**Cover Lifters** CoverCradle®, CoverCradle II, Lift 'n Glide®,  
or UpRite® (F/B only)

**Steps** Steps are available to match cabinet colors

**Entertainment** Bluetooth® Wireless Sound System (Optional)

**Control System** IQ 2020® with Color LCD Touchscreen  
230 V / 50 amp, 60 Hz  
(Includes G.F.C.I. protected sub-panel)

**Lighting System** Luminescence® multi-color four-zone

\*No special orders or shell substitutions available. Actual colors and products may vary from print representation. See dealer to verify.  
\*\*Includes water and 5 adults weighing 175 lbs. each.